

A Resource Guide for Lexington/Richland School District 5

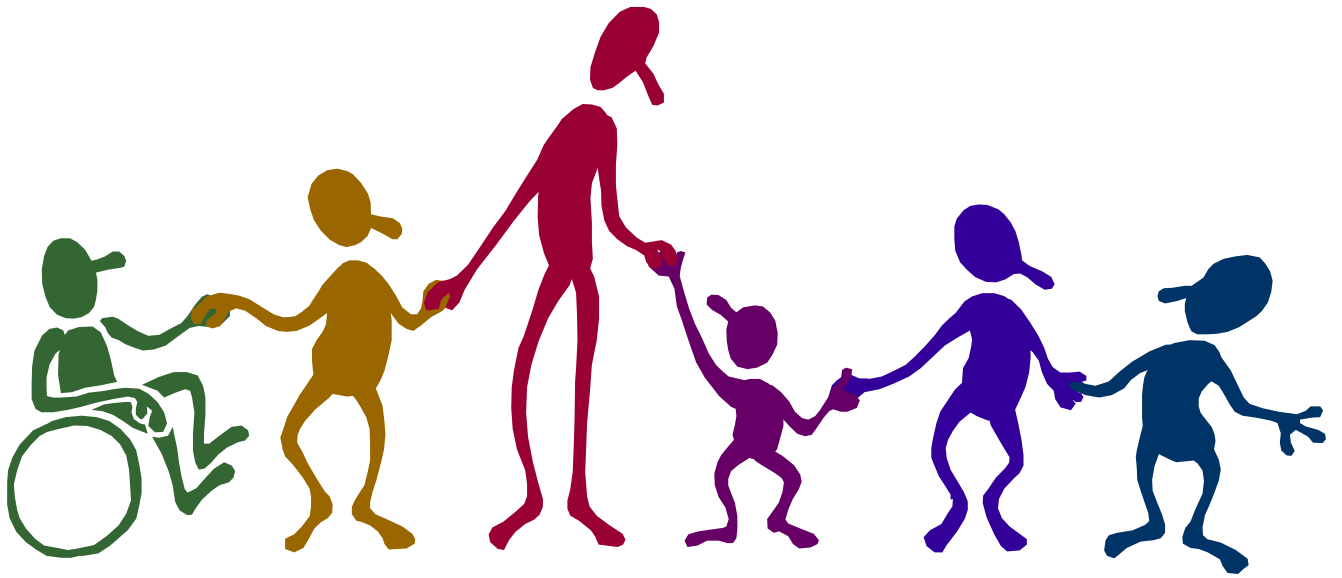


Table of Contents

Adoption.....3

Adult Education and Job Training Programs..... 4 - 6

After School Programs..... 6 - 7

Alcohol & Drug Abuse.....7 - 10

Advocacy.....10 - 12

Community and Faith Based Organizations.....12 - 13

Crisis Information and Hotlines.....13

Dentists accepting Medicaid.....14

Disability.....15

District 5 Schools.....16 - 17

Doctors Offices accepting Medicaid.....17 - 21

Early Intervention Services..... 21 - 24

Emergency Information.....24 - 25

Family Planning.....25 - 26

Food Banks & Clothing.....26 - 29

Health Insurance.....29

Inpatient Hospitalization.....29 - 30

Legal Services.....30 - 32

Mental Health Counselors.....32 - 36

Parenting Support.....37 - 38

Prescription Assistance.....38 - 39

Shelters and Transitional Housing.....39 - 41

Support Groups.....41 - 43

Supportive Services.....43 - 45

Transportation.....46

Utilities and Rent Assistance.....46 - 47

Vision.....48 - 49

Adoption Services

Bethany Christian Services

(803)779-0541

414 Center Street

West Columbia, SC 29169

- ❖ Bethany Christian Services provides adoption services for children coming from other countries (Russia, China, Albania, Romania, India, Costa Rica, Colombia, Bulgaria, Guatemala, etc.).
- ❖ Infants under the age of 6 months are placed in Bethany Christian Services for adoption.
- ❖ Bethany Christian Services offers a special needs program for children in custody of the Department of Social Services. The children in custody of DSS can be placed in with Bethany Christian Services until decisions about adoption have been made.

Catholic Charities of the Midlands

(803)254-9776

P.O. Box 7245

1428 Oak St

Columbia, SC 29204

Columbia, SC 29212

Hours: 9am-3pm

- ❖ Catholic Charities of the Midlands provides referrals for adoption services.

Children's Unlimited

(803)733-5450

2712 Middleburg Dr., Suite 207-A

Columbia, SC 29204

- ❖ Children's Unlimited is a distributor of adoption materials. Here, a group posts information about adoption throughout neighborhoods, parking lots, churches, and other various public arenas.

Department of Social Services

Richland County (803) 714-7300

Lexington County (803) 785-7333

- ❖ The Department of Social Services provides services to birth parents trying to place their child for adoption. DSS can also arrange services for entrance into a maternity home or a boarding home for care. Here, short-term boarding care is provided for the baby while mom is considering adoption decisions.

Adult Education and Job Training Services

Adult Education Richland/Lexington School District 5

(803) 476-8230 - Kathy Gear

Imo High Technology Building

6745 St. Andrews Road

Columbia, SC 29212

- ❖ Programs to obtain your high school diploma, GED and services for ESL.
- ❖ Must be at least 17 years old and withdrawn from high school.
- ❖ Cost for credit hours.

Alston Wilkes Society- Project Take Heart

(803)799-2490

3519 Medical Drive
Columbia SC 29203

- ❖ To be eligible for this program you must be a veteran who has been honorably discharged.
- ❖ Project Take Heart is for those in jail.

Christian Women's Job Corps of the Midlands (not sure)

(803)791-1558
2626 Hebron Drive
West Columbia SC 29169

- ❖ To be eligible for this program, you must be willing to sign a covenant to meet with a mentor and participate in a weekly Bible study.
- ❖ Christian Women's Job Corps of the Midlands provides a variety of education and career services. These services are: mentoring, career counseling, job reading skills, job searching assistance, and aid in life-skill development

Columbia Bethlehem Community Center - GED Classes (not sure)

(803)931-8023 Main Number
(803)254-8386 Fax
2500 Elmwood Avenue
P.O. Box 4186 Columbia SC 29240

- ❖ The Adult Education Program provides literacy services, computer and typing classes, and a GED program.

Columbia Workforce Center

(803) 737-5627
700 Taylor Street
Columbia, SC 29202

- ❖ Offers testing, job referral and placement, counseling and help with resume writing.
- ❖ Offer unemployment compensation for displaced workers.

Family Service Center

800-922-5651
2712 Middleburg Dr.
Suite 207-H
Columbia, SC 29204

- ❖ Family Service Center offers a **Welfare-to-Work** program.
- ❖ This program provides transitional assistance to individuals in finding and keeping subsidized employment.
- ❖ Childcare and transportation assistance, skills training, and case management services are provided to individuals after he/she returns to work.

Gleams Headstart - St. Andrews

(803)750-0053
1400 St. Andrews Road
Columbia SC 29210

- ❖ To be eligible for this program you must be low income.
- ❖ Gleams Headstart provides employability training and vocational counseling.
- ❖ Gleams Headstart involves you in on the job working experiences and job placement opportunities.

Job Corps

(803)256-9675 Mr. Gillings
800-922-8642 Toll Free
(803)256-9283 Fax
1518 Pickens St
Suite C
Columbia SC 29201

- ❖ To be eligible for this program you must be between the ages of 16 and 24. You must be low income and have a need for academic and/or vocational education.
- ❖ Job Corps provides a GED program, vocational training, and driver's education.

Lexington 5 J.O.B.S. Program (not sure)

Columbiana Ridge Apartments

- ❖ Provides job training experiences for students ages 10 -19 years.

Lexington Workforce Center (not sure)

(803)359-6131

714 S. Lake Drive

Lexington, SC 29072

- ❖ Offers testing, job referral and placement, counseling and help with resume writing.
- ❖ Offer unemployment compensation for displaced workers.

SC Vocational Rehabilitation (not sure)

(803)734-3519

(803) 734-9777 Columbia Regional Office

1410 Boston Avenue

West Columbia, SC 29171

- ❖ SC Vocational Rehabilitation assists disabled and/or handicapped people in locating employment by removing or working through barriers.

Wateree Community Action Council

(803)432-3411 (fax)

637 Rutledge St.

Camden, SC 29020

- ❖ Wateree Community Action provides on-the-job training and follow-up services for those in need.

After School Programs

Afternoon Safari

(803)772-3336

Seven Oaks Park

200 Leisure Lane

Columbia, SC 29210

- ❖ Afternoon Safari is offered by Seven Oaks Parks through the schools.
- ❖ Afternoon Safari is offered at Ballentine Elementary, Chapin Elementary, Chapin Middle, Leaphart Elementary, Crooked Creek and Columbia Oak Pointe.
- ❖ Afternoon Safari is held at these elementary schools from directly after school lets out until 6-6:15pm.
- ❖ The supervisors, teachers, and high school students involved work to provide snack and social time, homework assistance, and fun structured activities for your children.
- ❖ The fee for Afternoon Safari is \$45.00 per week per child (\$48 @ Crooked Creek and Chapin). If your child is part-time, the cost is \$12.00 per day per child.

Bundles of Joy II

(1225 Piney Grove Rd.

Columbia, SC 29210

- ❖ Serves ages 6-12, from 2pm-6:30pm, providing transportation to Sandell, Pine Grove, Leaphart, and Harbison West.
- ❖ Cost is \$65/child and activities include arts and crafts, hw time, snack, outside time, and centers

Cougar Cubs

(803) 732-8300

CrossRoads Middle School

6949 St. Andres Road

Columbia, SC 29212

- ❖ Serves CrossRoads students, from 2:30pm-6:00pm.
- ❖ Cost is \$50 weekly with a \$10 registration fee; there are no reduced fees or scholarships available. Activities include homework center, tutorial sessions, library and computer time, board games, fitness activities, and intramurals.
- ❖ , weekly themes, and circle time.

Picket Fences (not sure)

(803)732-03999

138 Friarsgate Blvd.

Irmo, SC 29063

- ❖ Serves children ages 5-12, until 6pm, providing transportation from all schools in Irmo.
- ❖ Cost is \$60 per child and activities include outside time, snack, and homework time.

Salem Academy (not sure)

(803)732-3441

7620 Woodrow St.

Irmo, SC 29212

- ❖ Serves children ages 5-12, from 3pm-6pm, providing transportation from Harbison West and H.E. Corley.
- ❖ Children must qualify to attend (based on income) and cost is free or \$30 depending on qualifications. Activities include academic enrichment, tutoring, physical enrichment, games, drama, music, etc.

Smart Kids

(803)750-0076

120 Commercial Dr.

Irmo, SC 29212

- ❖ Serves children ages 5-12, until 12pm, providing transportation from all district 5 schools as well as Pine Grove and Sandell.
- ❖ Cost is \$65 plus a \$50 registration fee; activities include following an activity calendar as well as having homework time, music and kick boxing.

Project S.O.A.R (not sure)

(803)732-3441

Salem Academy

7620 Woodrow Street

Irmo, SC 29063

- ❖ After School Program for K-5. Free for Title One School Students on Free/Reduced Lunch.
- ❖ Transportation only provided from Title One Schools.

YMCA After School Program

(803)407-8007

1501 Kennerly Road

Irmo, SC 29063

- ❖ Serves children ages 5-12, until 6pm, providing transportation from all elementary schools besides Irmo Elementary.
- ❖ Registration fee: \$25.00
- ❖ Cost is \$100.00 for members and \$150.00 for non-members from May to June; activities include homework assistance and indoor/outdoor activities.

Alcohol and Drug Programs

Alcoholics Anonymous-Columbia

(803)254-5301 24-hour Hotline
3014 Devine Street

<http://www.area62.org/>

Columbia SC 29205

- ❖ Alcoholics Anonymous is a twelve-step support group for people who recognize his/her addictions and need for help.
- ❖ There are 175 locations in the greater Columbia area
- ❖ There is a 24-hour hotline run by volunteers.

Al-Anon (not sure)

(803)735-9944 Local 24-Hour Line

888-425-2666 National Toll-Free Line (meeting info)

757-563-1600 National Business Line

757-563-1655 Fax

1600 Corporate Landing Parkway

Virginia Beach VA 23454

- ❖ Al-Anon is a support group to aid families and friends of alcoholics in recovering and dealing with the effects of living with the drinking of a friend or relative.
- ❖ The recovery program is based on Twelve Steps and Twelve Traditions of Alcoholics Anonymous. This helps provide a way to give healthy encouragement and understanding to addicted persons.

Ala-teen

888-425-2666 National Toll-Free Number (meeting info)

757-563-1600 National Business Line

757-563-1655 Fax

1500 Broad River Road

Columbia SC 29210

PO Box 8625

Columbia, SC 29202

Columbia Meetings: ((803)735-9944) PO Box 8625, 29202

- ❖ Ala-teen is a support group for teens that are affected by the alcoholism of relatives, friends, or other individuals.

Alston Wilkes Society- Veterans Home

(803)799-2490 Mr. Davis

3519 Medical Drive

Columbia SC 29203

- ❖ To be eligible for this program, you must be a veteran who has been honorably discharged.
- ❖ Alston Wilkes is a program that offers shelter for homeless veterans who have substance abuse problems.
- ❖ The residents are permitted to live in the home for up to two years.
- ❖ There are a few requirements for admission. The applicants must be drug and alcohol free. Applicants must currently be employed or seeking employment. The applicants must also complete an application and two interviews before being accepted into the program.

LEAP - Learning Excellence Alternative Program

(803)733-1376

- ❖ This program is offered to children 12-18 with a substance abuse problem or at risk for abusing substances.
- ❖ These treatment interventions assist parents and schools in preventing short-term student difficulties from becoming serious alcohol and drug abuse problems.

Lexington Baptist Association - Recovery through Faith

(803)356-2543 Business Telephone
255 Two Notch Road
Lexington SC 290723

- ❖ Recovery through Faith is a support group for recovering addicts of alcohol, drugs, and/or rape/assault.
- ❖ The support group meets one to two times per week.

LRADAC - ADSAP Alcohol Drug Safety Action Program

www.loradc.org

(803)726-9301 24-hour Telephone Line
(803)726-9301 Administrative Services
(803)726-9470 Adolescent Services
(803)726-9400 Lexington County
(803)726-9350 ADSAP Direct Number
(803)726-9480 Fax
2711 Colonial Drive
Columbia, SC 29203
1068 South Lake Drive
Lexington, SC 29073

- ❖ To be eligible for this program, you must be an individual who is currently abusing or at risk for abusing alcohol and drugs.
- ❖ You must have Medicaid or Insurance to participate in this program.
- ❖ ADSAP is an education and treatment program. It is designated for people who have been convicted of driving under the influence of drugs and/or alcohol.

LRADAC - Detoxification Services

(803)726-9390 24-hour Telephone Line
(803)733-1390 Administrative Services
(803)733-1380 Adolescent Services
(803)733-1376 Lexington County
(803)733-1395 Fax
2711 Colonial Drive
Columbia SC 29203

- ❖ To be eligible for this program, you must be currently abusing or at-risk for abusing alcohol and/or drugs.
- ❖ You must have Medicaid or Insurance to participate in the program.
- ❖ This program provides 24-hour detoxification services to people needing medically supervised withdrawal from alcohol and other drugs.

LRADAC - Residential Services

(803)256-3100 24-hour Telephone Line
(803)733-1390 Administrative Services
(803)733-1380 Adolescent Services
(803)733-1376 Lexington County
(803)733-1395 Fax
1325 Harden Street
134 North Hospital Drive
Columbia, SC 29205

- ❖ To be eligible for this program, you must currently be abusing or at-risk for abusing alcohol and other drugs.
- ❖ You must have Medicaid or alternative Insurance to participate in this program.
- ❖ The LRADAC residential program provides residential treatment to both men and women. The men's facilities are separate from the women's facilities. The homes are set in a residential community to provide a therapeutic setting for clients in their everyday lives.
- ❖ The LRADAC staff provides alcohol and drug counseling, employment counseling, recreational therapy, and other services. The participants are expected to actively participate in their recovery process.

LRADAC - Teen Discovery

(803)256-3100 24-hour Telephone Line
(803)733-1390 Administrative Services

(803)733-1380 Adolescent Services
(803)733-1376 Lexington County
(803)733-1395 Fax
1325 Harden Street
Columbia SC 29205

- ❖ Teen Discovery is an outpatient program designed to treat adolescents with alcohol and/or drug problems. This program is run in conjunction with the School Intervention Program.

Morris Village

(803)935-7100 24-hour line
(803)935-7329 Fax
610 Faison Drive
Columbia, SC 29203

Contact: Kathy

- ❖ To be eligible for this program, you must be a South Carolina resident 18 years of age or older. You must be in need of residential treatment for alcohol and/or other drug addictions.
- ❖ Morris Village is a state-run mental health facility. To be referred to this facility, you must visit your local alcohol and drug commission or your community mental health center.
- ❖ Morris Village treats both men and women, and houses voluntary, involuntary, and emergency patients.
- ❖ Morris Village has a fee of \$195.00 per day.

Narcotics Anonymous- Columbia (not sure)

(803)254-6262 Information Line
800-922-6587 24-hour Hotline
(803)799-6275 Fax
P.O. Box 13402
Columbia, SC 29201

- ❖ Narcotics Anonymous is a fellowship for men and women with drug abuse problems. This twelve-step program is run by recovered addicts.
- ❖ Narcotics Anonymous has an information line that provides meeting times and places in an area near you.
- ❖ Narcotics Anonymous provides a 24-hour hotline service. Here, a recovered addict volunteer is available to speak with you at any time, day or night.

New Beginnings Recovery Center

(803)758-2445
1417 Gregg Street
Columbia, SC 29201

- ❖ Drug Treatment Programs for teens 13-18

Palmetto Health Psychiatric Services- Richland Springs

(803)434-4800 Business Phone
(803)434-4878 Fax
11 Medical Park Drive
Columbia, SC 29203

- ❖ To be eligible for this program you must suffer from a psychiatric illness or an addiction to drugs and/or alcohol.
- ❖ The services are provided to children, adolescents, and adults suffering from a psychiatric illness or an addiction to alcohol and/or drugs.
- ❖ These services are offered at Palmetto Baptist and Richland Springs

Palmetto Health Baptist Chemical Dependency Intensive Outpatient Program (not sure)

(803)951-1902
12-18 years old

- ❖ Family participation is required
- ❖ Program is 6-8 weeks
- ❖ Treats co-occurring disorders

❖ Scholarships are available.

SC Department of Alcohol/Other Drug Abuse - D.I.A.L

(803)896-5555 Main Number
800-942-3425 Toll-Free Number
(803)896-5557 Fax
101 Executive Center Dr. Suite 215
Columbia SC 29210

- ❖ D.I.A.L. is a program put forth by the SC Department of Alcohol/Other Drug Abuse. This program provides different materials and information about alcohol and other drugs.
- ❖ D.I.A.L provides referrals to and information about drug and alcohol treatment centers in South Carolina.

Advocacy

Alliance for South Carolina's Children/ SC Prevent Child Abuse (not sure)

(803)256-4670
P.O. Box 11644
1338 Main Street, Suite 602
Columbia SC 29211

- ❖ Alliance is a non-profit education and advocacy organization for children's issues.
- ❖ Their mission is to improve the well being of South Carolina's children.

CHADD (Children and Adults with Attention Deficit Disorders)

- ❖ Serves people affected by attention deficit disorders and similar disabilities through family support and advocacy.

Children's Chance

(803)254-5996
609 Sims Avenue
Columbia, SC 29205

- ❖ Children's chance is a non-profit agency that raises money to fund a variety of programs to meet the emotional, psychological, and financial needs of the pediatric cancer patient and their families.
- ❖ The ultimate goal of Children's choice is to assist families in remaining intact and functional during their crisis.

Continuum of Care (not sure)

Governor Ombudsman
2221 Devine Street, Suite 422
Columbia, SC 29205

- ❖ Provides wraparound services for children through age 18 with diagnosis of severe emotional disturbance or handicap.
- ❖ provides intensive case management to assist the child, family and other agency providers in developing an individualized plan of service for those children eligible through a formal selection process. Not income based.

Federation of Families of SC

(803) 779-5363 Business Phone
(866) 779-0402 Toll-Free Number

- ❖ The Federation of Families of SC provides education, support, information, and advocacy to families who have children who have or are at risk for having behavioral and/or emotional challenges.

Governor Ombudsman-Client Assistance Program

(Federal Program)

(803)734-0285

(803)734-1147 TDD

800-868-0040 Toll Free

1205 Pendleton Street, Brown Building

Columbia SC 29201

- ❖ To be eligible for this you must be a person having a disability, either physical or mental, which prohibits you from functioning in life.
- ❖ The client assistance program advocates for clients with disabilities relating to vocational rehabilitation and commission for the blind.

NAMI (National Alliance for the Mentally Ill)

- ❖ provides support, education and advocacy for families and friends of people with mental illness and for persons with mental illness. Not income based.

Prevent Child Abuse SC

(803)733-5430

1712 Hampton St.

Columbia, SC 29201

- ❖ Offers programs and services to improve the well being of children in SC.

Pro Parents of South Carolina

800-759-4776 Business Phone

(803)772-5688 VOICE

652 Bush River Road, Suite 203

Columbia SC 29204

- ❖ The fees of each service are free of charge to parents
- ❖ Pro Parents provides information, training, and assistance. This information is related to the special education process and the education of children with disabilities.

Protection and Advocacy Systems for People with Disabilities

(803)790-1946

866-257-7279 HELPLINE #

3710 Landmark Drive, Suite 208

Columbia SC 29204

- ❖ To be eligible for this program, you must be a person with a disability in South Carolina.
- ❖ The Protection and Advocacy System for People with Disabilities is a private, non-profit corporation mandated by state and federal law to protect and advocate for the civil, legal, and human rights of people in South Carolina.

Community and Faith Based Organizations

Mission Columbia

803 926-3020

- ❖ Open Monday - Thursday 8 am- 11am
- ❖ Provide food, clothing and other services for people in need,
- ❖ Supported by local churches.

Family Worship Center

803 749-6800

- ❖ Will refer to LISCs program which assist with electricity bills, food and clothing.

Our Lady of the Hills Catholic Church

772-7400

120 Marydale Lane

- ❖ Provides assistance with food, clothing, utilities and other crisis.
- ❖ Food Pantry on site.

Right Direction Christian Center (not sure)

803 798-4700 fax

- ❖ Call and leave the name and number of person in need to set up an appointment time. They do help in assisting the needs of the local community.

Riverland Hills Baptist Church

Reverend Pitts

(803)772-3227

201 Lake Murray Blvd

Irmo, SC

- ❖ Will provide assistance on a case by case basis. Must speak to the pastor before any services can be approved.

Saint Simon and Saint Jude Episcopal Church

732-0153

1110 Kinley Road

Irmo, SC

- ❖ Prefers Harbison West Elementary.

Crisis and Information Hotlines

Autism Society of America

1-800-3AUTISM

- ❖ Advocacy, evaluation and referral

Care Line

1-800-868-0404.

- ❖ Statewide, toll-free hotline that provides assistance and support for obtaining access to family planning services, prenatal care, infant and child health care, assessment and care for children with special health care needs and other related services. Not income based.

Teen Health Alliance

1-877-876-2908

- ❖ Palmetto Health information line dealing with topics of adolescent health.
- ❖ Recorded information and counselors available.

NAMI

1-800-950-6264

- ❖ Information helpline for mental illnesses.

Suicide Prevention Lifeline

1-800-273-TALK

1-(803)790-4357

- ❖ Lifeline for those feeling depressed or suicidal.

United Way

211

- ❖ Offers referrals for emergency or non-emergency human needs.

Dental Offices

Children's Dental Clinic-Lexington County Health Department

(803)785-6556
1070 South Lake Drive
Lexington, SC 29073

- ❖ To be eligible for this program you must be a school-aged child, a Lexington County resident, and have a current Medicaid card.
- ❖ Dental care is provided to Lexington County children.

Children's Dental Clinic-Richland County Health Department

(803)929-6343
2000 Hampton Street
Columbia, SC 29204

- ❖ To be eligible for this program you must be a school-aged child, a Richland County resident, and have a current Medicaid card.
- ❖ Dental care is provided to Richland County children.

Children's Medicaid Dental of Columbia

(803)691-9930
3000 Two Notch Road
Columbia, SC 29204

- ❖ Children's Medicaid Dental provides dental care to Medicaid recipients ages 0 - 20 years.

Patrick B. Daley, DMD (not currently accepting new Medicaid patients)

(803)407-9580
100 Hunter Village Dr. Suite B
Irmo, SC 29063

John L. Edwards, DDS (not currently accepting new Medicaid patients)

(803)732-9148
P.O. Box 2147
Irmo, SC 29063-7147

Marshall C. Fields

(803)407-6511
1612 Lake Murray Blvd.
Columbia, SC 29212

Carol A. French

(803)781-2511
#1 Thames Valley
Irmo, SC 29063

James Nyland, DDS

(803)772-7302
392 St. Andrews Road
Columbia, SC 29210

Disability Information

Disability Action Center

(803)779-5121
1115 Belleview St.
Columbia, SC 29201

- ❖ Provides advocacy, information and referrals, independent living skills, and peer counseling to those with disabilities.

Family Connections

Phone: (803) 252-0914
Toll Free: 1-800-578-8750
Fax: (803) 799-8017
2712 Middleburg Drive
Suite 103B
Columbia, SC 29204
Email: info@familyconnections.org

- ❖ Parent-to-parent networking and support for parents with disabled children.

National Dissemination Center for Children with Disabilities (NICHY)

<http://www.nichcy.org/Pages/Home.aspx>

- ❖ Provides resources on children with disabilities.

Social Security Supplemental Security Income (SSI)

1-800-772-1213
<http://www.ssa.gov>

- ❖ Pays benefits to disabled adults and children who have limited income and resources.
- ❖ To receive supplemental security income, persons must have a medically documented condition that keeps them from performing gainful activities and will last at least 12 months or to result in death.

South Carolina Department of Disabilities and Special Needs (DDSN)

(803) 898-9600
Toll Free: 1-888-DSN-INFO (376-4636)
3440 Harden St. Ext. PO Box 4706
Columbia, SC 29240 Columbia, SC 29203

- ❖ Services for the severe, lifelong disabilities of mental retardation and related disabilities, autism, traumatic brain injury, and spinal cord injury and related disabilities.

District Five Schools

Elementary Schools

Ballentine Elementary

Principal - Robin Bright
1040 Bickley Road
Irmo, SC 29063
Phone: (803) 476-4500
Fax: (803) 476-4520

Dutch Fork Elementary

Principal - June Lominack
7900 Broad River Road
Irmo, SC 29063
Phone: (803) 476-3900
Fax: (803) 476-3920

Harbison West Elementary

Principal - Barbara Brockhard
257 Crossbow Drive
Columbia, SC 29212
Phone: (803) 476-3800
Fax: (803) 476-3820

Lake Murray Elementary

Principal - Claire Thompson
1531 Three Dog Road
Chapin, SC 29036
Phone: (803) 732-8151
Fax: (803) 476-4620

Nursery Road Elementary

Principal - Christina Melton
6706 Nursery Road
Columbia, SC 29212
Phone: (803) 732-8475
Fax: (803) 476-4320

River Springs Elementary

Principal - Melanie Cohen
115 Connie Wright Road
Irmo, SC 29063
Phone: (803) 476-4400
Fax: (803) 476-4420

Chapin Elementary

Principal - Harriet Wilson
940 Old Bush River Road
Chapin, SC 29036
Phone: (803) 575-5900
Fax: (803) 575-5920

H.E. Corley Elementary

Principal - Judith Franchini
1500 Chadford Road
Irmo, SC 29063
Phone: (803) 476-4001
Fax: (803) 476-4020

Irmo Elementary

Principal - Shannon McAlister
7401 Gibbes Street
Irmo, SC 29063
Phone: (803) 732-8275
Fax: (803) 732-8035

Leaphart Elementary

Principal - Rebecca McKenzie-Apling
120 Piney Grove Road
Columbia, SC 29210
Phone: (803) 476-4700
Fax: (803) 476-4720

Oak Pointe Elementary

Principal - Jim Stephens
1 River Bottom Road
Irmo, SC 29063
Phone: (803) 476-4100
Fax: (803) 476-4120

Seven Oaks Elementary

Principal - Ann Copelan
2800 Ashland Road
Columbia, SC 29210
Phone: (803) 476-8500
Fax: (803) 476-8520

Middle Schools

Chapin Middle School

Principal - Michael Lofton
1130 Old Lexington Hwy
Chapin, SC 29036
Phone: (803) 575-5700
Fax: (803) 575-5720

Crossroads Middle School

Principal - Jess Hutchison
6949 St. Andrews Road
Columbia, SC 29212
Phone: (803) 476-8300
Fax: (803) 476-8300

Dutch Fork Middle School

Principal - Roderic Taylor
1528 Old Tamah Road
Irmo, SC 29063
Phone: (803) 476-4800
Fax: (803) 476-4820

Irmo Middle School

Principal - Marie Waldrop
6051 Wescott Road
Columbia, SC 29212
Phone: (803) 476-3600
Fax: (803) 476-3620

High Schools

Chapin High School

Principal - Akil Ross
300 Columbia Avenue
Chapin, SC 29036
Phone: (803) 575-5400
Fax: (803) 575-5420

Dutch Fork High School

Principal - Gregg Morton
1400 Old Tamah Road
Irmo, SC 29063
Phone: (803) 476-3300
Fax: (803) 476-3320

Irmo High School

Principal - Rob Weinkle
6671 St. Andrews Road
Columbia, SC 29212
Phone: (803) 476-3000
Fax: (803) 476-3020

Doctor Offices

BC Pediatrics of Batesburg-Leesville

(803)532-2208
120 West Church St. Suite E
Batesburg, SC 29006

Brookland Cayce Pediatrics

(803)739-6982
Fax: 803-604-0207
500 North 12 St.
West Columbia SC 29169

Carolina Asthma and Allergy

Dr. Lawrence- Weiner & Dr. Howland
803 765-9233
1 Medical Park Suite 200
Columbia, SC 29203

- ❖ Must have referral from a physician, depending on insurance.

Carolina Pediatrics

(803)376-2838

7033 St. Andrews Road Suite 103

Columbia, SC 29212

- ❖ Only accepts standard Medicaid.

Chapin Family Practice

803 345-3414

Chapin, SC 29036

- ❖ Only accept standard Medicaid and it must be verified before first visit.

Chapin Pediatrics

(803) 932-2200

119 Amicks Ferry Road

Chapin, SC 29036

- ❖ Accepts Regular Medicaid, First Choice

Columbia Brace Shop

803 256-4359

1739 Blanding Street

Columbia, SC 29201

Columbia Heart Clinic

803 256-6511

1 Richland Medical Park Suite 300

Columbia, SC 29203

Eau Claire Family Practice

(803) 754-0151

4801 Monticello Road

Columbia, SC 29203

Childrens Hospital Outpatient Center

(803)434-6155

14 Richland Medical Park Ste 400

Columbia, SC 29203

Free Medical Clinic

(803)765-1503

1875 Harden Street

Columbia, SC 29204

- ❖ To be eligible for services you must have no medical insurance and meet the state poverty guidelines. You must also be part of "the working poor".
- ❖ Free Medical Clinic offers a pharmacy for people receiving services.

Gurdon Counts MD

(803) 532-3857

110 East Columbia Ave

- ❖ Patients include both children and adults.
- ❖ Accepts Medicaid

Lexington County Health Department - Child Health

(803)791-3580

1070 South Lake Drive

Lexington, SC 29073

Lexington Medical Centers

Irmo

(803) 749-0924

7035 St. Andrews Road

Columbia, SC 29212

- ❖ Accepts Medicaid.
- ❖ Patients include both children and adult.

Chapin

(803) 932-0655

557 Columbia Ave.

Chapin, SC 29036

- ❖ Accepts Medicaid.
- ❖ Patients include both children and adult.

Gilbert

(803) 892-1800

4080 Augusta HWY

Gilbert, SC 29054

- ❖ Accepts regular Medicaid.
- ❖ Patients include both children and adult.

Batesburg-Leesville

(803) 604-0066

338 East Columbia Ave

Batesburg-Leesville, SC

- ❖ Accepts Medicaid.
- ❖ Patients include both children and adult.

Lexington

(803) 358-6100

1811 West Main St

Lexington, SC 29072

- ❖ Accepts traditional Medicaid and Select Health.
- ❖ Patients include both children and adult.

Swansea

(803) 568-2000

935 West Second St.

Swansea, SC 29160

- ❖ Accepts Medicaid.
- ❖ Patients include both children and adult.

Lexington Urological

(803)796-9968

139 Summer Place Drive

West Columbia, SC 29169

Lexington Women's Care (OBGYN)

(803) 936-8100

2728 Sunset Blvd Ste 201

West Columbia, SC 29169

- ❖ Accepts Medicaid for pregnancy only.

Lexington Women's Care Irmo (OBGYN)

(803) 749-9920
7033 St. Andrews Rd
Columbia, SC 29212

Midlands Orthopedics

803 256-4107
1910 Blanding St.
Columbia, SC 29201

Midlands Pediatrics

(803)254-4257
2712 Middleburg Dr Suite 101
Columbia, Sc 29204

- ❖ Only accepts standard Medicaid, HMO, United Health, Blue Choice, Absolute Total Care, and First Choice.

Palmetto Pediatrics

(803)732-0140
16 Woodcross Drive
Columbia, SC 29212

- ❖ Accepts Regular Medicaid, Select Health, Total Carolina Care, First Choice and Unison.
- ❖ Will see children and adolescents up to the age of 18 years old.

Palmetto Language Speech Center

803 356-9833
803 996-0548
109 Vista Oaks Dr. Suite A
Lexington, SC 29072

P.D. Bullard (OBGYN)

(803) 936-8080
Medical Park 1 Ste 310
West Columbia, SC 29169

- ❖ Accepts standard Medicaid only, as long as patient is not pregnant.

Richland Community Health Care--Richland Primary Care Center

(803)799-8407
1520 Laurel Street
Columbia, SC 29201

- ❖ Accept Medicaid but also are willing to work on a sliding scale.

Richland OBGYN

(803) 779-6776
9 Richland Medical Park Suite 620
Columbia, SC 29203

- ❖ Accepts Medicaid.

Sandhills Pediatrics

(803)407-0704
7941 Broad River Road
Irmo, SC 29063

(803) 744-9000 (Dr. Hale)
100 Summit Center Dr.
Columbia, SC 29229

- ❖ Accepts Regular Medicaid, First Choice and Unison

Dr. William Westerkam

(803) 749-0181

320 Harbison Blvd.

Columbia, SC 29212

- ❖ Accepts standard Medicaid only

Early Intervention Services

BabyNet - South Carolina Department of Health and Environmental Control

Phone: (803) 576-2990

2000 Hampton Street, Room 3061

Columbia, SC 29204

- ❖ To be eligible for this program you must have a child with a diagnosis of a developmental delay or disability.
- ❖ BabyNet provides early intervention services to families who have infants and toddlers with developmental delays or disabilities.
- ❖ This program provides a system of coordinated early intervention services to families who have infants or toddlers with developmental delays or disabilities.
- ❖ Early intervention services include therapies (occupational therapies, physical therapies, psychological therapies, and support groups, family counseling), assertive aids and devices, speech/vision/hearing services (fitting a hearing aid or glasses prescriptions), nursing services, health services, nutrition services, transportation to doctor's appointments, special instructions to parents in need, and service coordination.

Bright Start

(803)929-1112

720 Gray Cern Road Suite 450

Columbia, SC 29210

- ❖ Offers intensive developmental instruction to parents with children ages birth to five with developmental delays.
- ❖ Services include home visits, on-going service coordination, family training, and experienced early interventionists to work with Autistic children.

Children's Chance

(803)254-5996

Katherine Long

609 Sims Avenue - second floor

Columbia, SC 29205

- ❖ Children's Chance is a non-profit organization that raises money to fund a variety of programs to meet the emotional, psychological, and financial needs of pediatric cancer patients and their families.
- ❖ The ultimate goal of Children's Chance is to assist families in remaining intact and functional during this crisis.

Easter Seals

(803)256-0735

800-951-4090 Toll Free Number

3020 Farrow Road

Columbia, SC 29203

- ❖ To be eligible for the programs offered by Easter Seals, you must be a person with a physical disability or a family member of a person with a physical disability. In some cases, individuals wishing to receive services must have rehab potential and be referred by an MD.
- ❖ Medicare, Medicaid, and private insurance are accepted.
- ❖ Easter Seals provides a variety of programs:
 - Occupational therapy
 - Physical therapy
 - Speech Therapy
 - Pediatric therapy (medical rehabilitation, job training and employment, inclusive childcare, adult day services, advocacy, information/referral, social work, supportive counseling, and camping and recreation).

Epworth Early Intervention Services

(803)212-4768 EI's line

(803)256-7394 Main line

P.O. Box 50466

Columbia, SC 29250

- ❖ Epworth provides specialized preschool training to children birth-5 years.
- ❖ In-home training is provided to children under age 3.
- ❖ Hear, teachers and parents work together to develop goals and activities that will aid the child in reaching his/her maximum potential.
- ❖ The early intervention specialist makes in-home weekly visits to the child each child.
- ❖ These services are available to parents who do not wish to go through the public school system.

Gleamns Head Start Center

(803)750-0053

1400 St. Andrews Rd.

Columbia, SC 29210

- ❖ To be eligible for this program you must present immunization records, birth certificate, and food stamps number.
- ❖ You must be a low-income family.
- ❖ Each child must have a birthday by September 1st.
- ❖ Gleamns Head Start Center provides comprehensive child development services for low-income families with children between the ages of 2-4 years. These comprehensive services include speech and hearing, dental, and physicals.

Richland/Lexington Special Needs Board-Step Ahead

(803)252-5179

301 Greystone Blvd.

Columbia, SC 29210

- ❖ To be eligible for this program, you must have a child from birth to age six
- ❖ Must be referred through BabyNet. Medicaid, private insurance, and other public funds and community resources are accepted.
- ❖ Early Interventionists make weekly home visits, suggest exercises and learning games, guide in applications for governmental benefits, and make referrals for community resources.

USC Speech and Hearing Center

(803)777-2614 Cochlear Implant Program

(803)777-2630 Appointments

1601 St. Julian Place

Columbia, SC 29204

- ❖ USC provides hearing services are restricted to cochlear implant services. Speech therapy is provided to individuals of all age.
- ❖ USC has a fixed evaluation fee and works on a sliding fee scale for therapy.
- ❖ Speech and Hearing Center provides diagnostic and therapy services to children with hearing, speech, language, and swallowing disorders. Speech-language and swallowing diagnostic and therapeutic services are also provided to adults.

Lexington/Richland School District 5 Three and Four Year Preschool Programs

(803)732-8375 Paulette Rayfield - 3 & 4 yr. Preschool Special Education Program.

(803)732-8241 Dan Wuori - Four-year-old Child Development Program

- ❖ To be eligible for the **three-year-old special-education preschool program**, your child must have a developmental delay (motor skills, cognition, social skills, etc.)
- ❖ Each child needs to complete the referral process. Children may be referred from BabyNet, Bright Start, or other Early Intervention programs. Parents and pediatricians may also refer children to the program.
- ❖ Children in the three-year-old preschool program will receive speech therapy, occupational therapy, and qualify for school-based services.
- ❖ The three-year-old preschool program follows the guidelines of the High-Scope Curriculum.
- ❖ All children enrolled in the program will have Individual Education Plans (IEP), which are aligned with preschool standards.
- ❖ All families of children enrolled will receive home-based services (home visits, not required except for 4 year olds). Parents can participate in parent education nights and activities.
- ❖ To be eligible for the **four-year-old special-education preschool program**, your child must have a disability. This will be determined through a screening process.
- ❖ The screening process involves the completion of the DIAL 3 screening instrument. This will be conducted by a preschool teacher, a preschool psychologist, and a speech therapist.
- ❖ The children in the four-year-program has to meet state requirements and will receive speech therapy, occupational therapy, and qualify for school-based services.
- ❖ The four-year-old preschool program follows the guidelines of the High-Scope Curriculum.
- ❖ All children enrolled in the program will have Individual Education Plans (IEP), which are aligned with kindergarten standards.
- ❖ All families of children enrolled will receive home-based services (home visits, required). Parents may participate in parent education nights and activities.
- ❖ To be eligible for the **Four-year-old Child Development Program**, your child must meet the criteria for an at-risk child. This is determined by viewing socioeconomic status, parent education level, cognitive development, language development, motor skills abilities, and scores on the DIAL 3.
- ❖ The four-year-old child development program follows the guidelines of the High-Scope Curriculum, which is literacy-based.

Welcome Baby/ SC Prevent Child Abuse

(803)733-5430

Prevent Child Abuse South Carolina

1634 Main Street, Suite 100

Columbia, SC 29201

William S. Hall Psychiatric Institute-Diagnostic Preschool Program

(803)898-2700

P.O. Box 119-Cottage C

1800 Colonial Drive

Columbia, SC 29202

- ❖ The Diagnostic Preschool Program is a comprehensive, multidisciplinary day program for children ages 2 ½ -5 years that have emotional, behavioral, or developmental concerns.
- ❖ The program is three hours each morning for 3-6 months. Only 6-8 children will be served at one time.
- ❖ The program seeks to identify effective ways to modify inappropriate behavior.

William S. Hall Psychiatric Institute-Infant and Early Childhood Clinic

(803)898-2700

P.O. Box 119-Cottage C

1800 Colonial Drive

Columbia, SC 29202

- ❖ The Infant and Early Childhood Clinic provides multidisciplinary assessments, intervention planning, and follow-up assessments for children under 5.
- ❖ The presenting problems addressed are:
 - **Regulatory Disturbances-** sleep disturbances, excessive crying or irritability, eating difficulties, low frustration tolerance, and self-stimulating or unusual movement.
 - **Social/Environmental Disturbances-** failure to identify family members, apathetic, withdrawn, expressionless, excessive negativism, no interest in objects or play, abuse, neglect, or multiple placements, and repeated or prolonged separations.
 - **Psycho-physiological Disturbances-** failure to thrive, recurrent vomiting or chronic diarrhea, recurrent dermatitis, and recurrent wheezing

Emergency Numbers

Chapin Police

(803) 345-6443

Lexington County DSS

Child Abuse and Neglect

(803) 785-7333

Lexington County Sheriff's Department

(803) 785-8230

Irmo Police

(803) 781-8088

Irmo Fire Department

(803) 798-4979

Palmetto Richland Memorial Hospital - Ambulatory Care Center

(803) 434-4100

3301 Harden St.

Columbia, SC 29203

Poison Control

1-800-222-1222

Richland County DSS

Child Abuse and Neglect

(903) 714-7444

Richland County Sheriff's Department
(803) 898-9830

Safe Schools Hotline
(803) 732-8012

- ❖ Anonymous tips and information about school emergencies.

Family Planning

Birthright of Columbia
(803)765-0165
2318 Devine Street
Columbia, SC 29205

- ❖ To be eligible for this program you must be pregnant
- ❖ Birthright of Columbia provides free pregnancy testing and counseling for pregnant women.
- ❖ This program does have an emergency shelter for pregnant women.
- ❖ Birthright of Columbia can provide baby clothing and referral sources when needed.

Daybreak Crisis Pregnancy Center
(803) 771-6634
2009 Hampton Street
Columbia, SC 29204

- ❖ Daybreak Crisis Pregnancy Center provides health care services and referral services for pregnant women in need.

Lexington County Health Department
(803)791-3580
1070 South Lake Drive
Lexington, SC 29073

- ❖ Lexington County Health Department provides family planning services to aid people in having the number of children they desire through family planning services.
- ❖ The fee for services will vary depending upon the type of services received.

Palmetto Baptist Medical Center
(803)296-5010
133 Taylor Street
Columbia, SC 29201

- ❖ Offers family planning, HIV testing, and birth control.

Richland Primary Health Care
Richland Primary Care Center
(803)799-8407
1520 Laurel Street
Columbia, SC 29201

- ❖ Provides family planning services.
- ❖ The fee for service will vary depending upon services received.

Richland County Health Department
(803)576-2980
2000 Hampton Street
Columbia, SC 29204

- ❖ Richland County Health Department provides family planning services.

Teen Clinic/Palmetto Richland Hospital

(803)779-4928

(803)434-4118 Information Hotline

- ❖ Works on meeting medical and social needs of teen mothers.

Food Banks/ Clothing

Bethlehem Baptist Church of Columbia

(803)254-5651

(803)256-6507

1218 Lyon Street

Columbia, SC 29204

- ❖ Bethlehem Baptist Church of Columbia provides a food pantry for people in need.

Bethlehem Community Center

(803)931-8023

2500 Elmwood Avenue

Columbia, SC 29201

- ❖ To be eligible to receive services you must have a referral from another agency or a self-proclaimed need.
- ❖ Bethlehem Community Center provides a food pantry for the needy.

Christian Outreach Center

(803)794-1001

1049 Harbor Drive

West Columbia, SC 29169

- ❖ Provides a food pantry to those in need.

Clothe a Child

950 Old Lexington Hwy

Chapin, SC 29036

(803) 345-3477

- ❖ For elementary aged students in the Chapin area.
- ❖ Provides 100 dollars and a personal shopper at the beginning of the school year to over 100 students. The "personal shopper" treats the family to breakfast at Waffle House and then takes the student on a shopping spree to obtain new school clothes.
- ❖ This must be arranged before the first day of school. Contact Chapin Baptist Church at the end of the school year or over the summer to place a child's name on the list.

Columbia Metro Baptist Association Food Pantry

(803)256-9165

2661 Two Notch Road

Columbia, SC 29204

- ❖ To be eligible you must have an agency send or call in a referral for service.
- ❖ Columbia Metro Baptist Association Food Pantry is open Monday, Tuesday, and Thursday from 10-2pm.

Department of Social Services

(803)898-7601

1535 Confederate Avenue

Columbia, SC 29202

- ❖ Department of Social Services provides a variety of services. In relation to food, DSS provides food stamps to those who meet the eligibility requirements.

Department of Social Services--Afterschool Snack Program

(803)898-7601

3220 Two Notch Road

Columbia, SC 29204

- ❖ DSS provides an **Afterschool Snack Program**. This program provides free snacks to children participating in an organized program of after school care.
- ❖ To be eligible for this program regularly scheduled education and enrichment activities must be provided in a supervised environment. The organization must be a public or private non-profit with 25% ABC Voucher enrolled children. The afterschool program must be offered in a school area where $\frac{1}{2}$ of the children are eligible for free or reduced price meals.

Department of Social Services--Summer Food Service Program

(803)898-7601

3220 Two Notch Road

Columbia, SC 29204

- ❖ DSS provides a **Summer Food Service Program**. This program offers free meals to children during the summer months. This service is offered at different locations around Columbia. Please call Betty Quave for more information.

Gleamns Headstart

(803)750-0053

1400 St. Andrews Road

Columbia, SC 29210

- ❖ To be eligible for this program you must be low-income.
- ❖ Gleamns Headstart provides one-time emergency assistance to purchase food.

God's Storehouse

(803)691-1622

1731 Risley Rd.

Columbia, SC 29223

- ❖ God's Storehouse provides a food pantry.

Good Shepard Lutheran Church

(803)787-4413

3909 Forest Drive

Columbia, SC 29204

- ❖ Good Shepard provides a food pantry to those in need from 8:30am-4pm.

Family Shelter

(803) 771-7040

2411 Two Notch Road

Columbia, SC 29204

- ❖ To be eligible for services you must be a family with children under the age of 13 years.
- ❖ Family Shelter provides emergency food and shelter.
- ❖ The cost is \$3 per day.

Harvest Hope Food Bank

(803)254-4432

2220 Shop Road

Columbia, SC 29201

- ❖ Harvest Hope Food Bank provides a three-day supply of food for each family member.
- ❖ There is a 90-day interval between each referral.
- ❖ You must have a completed referral form to receive services.

Oliver Gospel Mission

(803)254-6470
1100 Taylor Street
Columbia, SC 29201

- ❖ Oliver Gospel Mission provides meals twice per day: 6-7am and 4-7:30pm.

Red Cross

(803)251-6000
2751 Bull Street
Columbia, SC 29201

- ❖ The Red Cross provides assistance for fire victims only.

Salvation Army

(803)765-0260
2025 Main Street
Columbia, SC 29201

- ❖ The Salvation Army accepts referrals from DSS.
- ❖ Food vouchers will be issued to non-food stamp recipients.
- ❖ Recipients of food stamps can receive services if food stamps have been lost or stolen.

Sharing God's Love

(803)732-3188
147 Friarsgate Blvd.
Irmo, SC 29063

- ❖ Sharing God's Love provides assistance with food and clothing to those in need from 9am-12pm.

St. John's Thrift Shop

(803)799-4767
(803)252-5056 Fax
2827 Wheat Street
Columbia, SC 29205

- ❖ St. John's Thrift Shop provides assistance with food, clothing, and utilities.

Trinity Episcopal Cathedral

(803)771-7300
1100 Sumter Street
Columbia, SC 29201

- ❖ Trinity Episcopal Cathedral provides assistance with food and utility bills.

Washington Street United Methodist Church

(803)254-8405
1401 Washington Street
Columbia, SC 29210

- ❖ Washington Street United Methodist Church provides a soup kitchen Monday-Friday 10:45-11:30 am.

We Care Center

(803)345-3244
1612 Chapin Road
Chapin, SC 29036

- ❖ Provides assistance with emergency food baskets.
- ❖ Limited funds for rent, utilities, medical, dental and shelter.

Wheels Van

(803) 960-6950

- ❖ Provides meals to those in the Harbison area that do not have transportation.

Women, Infants, and Children (WIC)-Supplemental Food Program

(803)791-3580

Lexington County Health Department

112 West Hospital Drive

West Columbia, SC 29169

- ❖ To be eligible for WIC services, you must meet the low-income requirements set forth by the state.
- ❖ WIC is available for women who are pregnant (up to 6-weeks after birth), postpartum (up to 6-months after birth), breastfeeding (up to one year after birth), infants, and children up to 5 years of age.
- ❖ Individuals wanting to participate in WIC supplemental food program must meet at least one of the medical/dietary conditions on South Carolina's list of WIC nutritional risks.
- ❖ WIC is supplemental food program that provides supplemental food to women, infants, and children.

Women, Infants, and Children (WIC)-Supplemental Food Program

(803)576-2900

(803)576-2942

(803)576-2940

Richland County Health Department

2000 Hampton Street

Columbia, SC 29204

- ❖ Services and eligibility are the same as above.

Health Insurance

Medicaid

1-888-549-0820 General Information

1-888-549-0820 Eligibility

1-(803)264-1650 Information on Providers

- ❖ Governmental cost sharing program of medical care for needy persons with low income.

South Carolina Health Insurance Pool (SCHIP)

1-800-868-2500 ext. 42757

- ❖ State health insurance program administered by Blue Cross Blue Shield for individuals who are refused insurance coverage for health reasons or whose rate is more than 150% of the SCHIP rate.

Inpatient Hospitalization and Outpatient

Baptist/ Richland Springs

434-4813, 434-4800, 296-3566

- ❖ Accepts private insurance, Medicare and Medicaid
- ❖ Assessment Center: 434-4813

Bryan Psychiatric Hospital

935-7146; 935-5895

- ❖ Self pay and any insurance (state supported)

Charleston Center

1843-722-0100

- ❖ Private Insurance
- ❖ Center for adults and adolescence struggling with substance abuse.

Columbia Metro Treatment Center

(803) 791-9422

421 Capital Square

West Columbia, SC 29169

- ❖ A methadone clinic that assists in helping patients off of their methadone.

Morris Village

935-7100, 935-7724, 935-7781, 935-6760

- ❖ Self pay and any insurance (state supported)

MUSC

1843-758-2500

- ❖ Private Insurance
- ❖ Accepting adults and adolescence with behavioral and substance abuse problems.

New Beginnings

(803) 758-2445

1417 Gregg St.

- ❖ Provides intensive treatment for adults with substance abuse.
- ❖ Private Insurance

Richland Springs/ Palmetto Baptist

434-4813 (assessment center)

11 Medical Park

Columbia, SC

- ❖ Private insurance accepted; Medicaid is accepted for inpatient hospitalization only.
- ❖ Offers treatment for psychiatric issues, substance abuse and behavioral problems for all ages.
- ❖ Partial inpatient hospitalization is available.
- ❖ For Adolescence Chemical Dependency hospitalization call (803)951-1902

Three Rivers

(803)796-9911

2900 Sunset Blvd

West Columbia, SC 29169

- ❖ Inpatient and outpatient services for substance abuse, psychiatric illness and depression.
- ❖ Accepts private insurance and Medicaid for all ages.
- ❖ There is an on site licensed teacher that provides schooling for inpatient school aged children and adolescence.
- ❖ Three Rivers Behavioral Health sponsors regular support groups for Alcoholics Anonymous, Emotions Anonymous, Narcotics Anonymous, and Federation of Families.

William S. Hall

898-1693

- ❖ Medicaid and private insurance accepted (state supported)
- ❖ Children only

Legal Services**Lawyer Referral Services**

(803)733-7100

950 Taylor Street

Columbia, SC 29201

- ❖ To be eligible for this program, you must be a resident of Lexington or Richland County.
- ❖ Lawyer Referral Service seeks to assist clients in finding an attorney.
- ❖ The initial consultation fee is \$25.00 for the first 30 minutes.

Office of Governor Ombudsman

(803)734-0285 Voice

(803)734-1147 TDD

800-868-0040 Toll Free

1205 Pendleton Street, Room 463
Brown Building
Columbia SC 29201

- ❖ To be eligible for this you must be a person having a disability, either physical or mental, which prohibits you from functioning in life.
- ❖ The client assistance program advocates for clients with disabilities relating to vocational rehabilitation and commission for the blind.

Palmetto Legal Services

(803)359-4154
426 South Lake Drive
Lexington, SC 29072

- ❖ Palmetto Legal Services provides legal service for civil and family court cases only.
- ❖ Divorce cases on grounds of cruelty and/or substance abuse are also taken.
- ❖ Your will need to call directly for an appointment.

Federal Public Defenders Office

(803)765-2592
1901 Assembly Street, #200
Columbia, SC 29201

- ❖ The Public Defenders Office provides legal services in regard to criminal cases.

SC Bar Pro Bono Program

(803)799-6653
950 Taylor Street
Columbia, SC 29201

- ❖ The Pro Bono Program provides legal representation free-of-charge to those individuals meeting the set guidelines. This information can be obtained by contacting Legal Aid Telephone Intake Service (LATIS).
- ❖ Individuals may be charged for related costs such as filing and services fees.
- ❖ Legal representation is dependent upon availability of lawyers. It may take up to four weeks to receive services.

SC Hispanic Outreach

(803)419-5112
7915 Old Percival Road
Columbia, SC 29223

- ❖ To be eligible for services, you must be a Hispanic is South Carolina.
- ❖ Provide services such as health outreach and education, HIV/AIDS/STD and cancer prevention, cultural competency, workforce development, and document translation (small fees may apply).

South Carolina Legal Services

www.sclegal.org

744-9430	996-4154
888-799-9668	800-280-1851
2109 Bull Street	381 Main Street
Columbia, SC 29201	Columbia, SC 29201

- ❖ Free legal services and representation to low income individuals.

Mental Health Counseling

Affiliated Family Services

(803)252-5300
2016 Assembly St.
Columbia, SC 29201

- ❖ Affiliated Family Services provides counseling services.
- ❖ These services work on a fee-for-service basis.
- ❖ You may be self-referred or referred by a specific agency.

Assessment and Resource Center (ARC)

(803)898-1470
The Wilson Building
1800 Colonial Drive;
Columbia, SC 29203

- ❖ Provides forensic examinations and interviews for children suspected of being sexually abused.
- ❖ Provides individual, group, and family therapy for abused/neglected children.

Behavioral Health Services - Baptist Medical Center

1-888-724-7888 or (803)434-4813 anytime

- ❖ Behavioral Health Services provides counseling services to people in need.

Children's Chance

(803)254-5996
609 Sims Avenue
Columbia, SC 29205

- ❖ Children's Chance provides counseling services to children in South Carolina with cancer and their families.
- ❖ To be eligible for this program you must be an individual or a family member of an individual who needs support dealing with the personal or family-dynamic related stress resulting from childhood cancer.
- ❖ Individual and families who are grieving with the loss of a child to cancer may also benefit from these counseling services.

Columbia Area Mental Health

898-4800
2715 Colonial Drive
Columbia, SC 29203

- ❖ Counseling and medication services for those with mental illnesses.

Columbia Counseling Center

900 St. Andrews Road
Columbia, SC 29210

- ❖ Provide therapy for children, adolescents, and adults.

Crossroads Counseling Center

359-7905
130 Whiteford Way, Ste. A
Lexington, SC 29073

1 Wellness Blvd.
Irmo, SC 29063

- ❖ Provide therapy and counseling for children, adolescents, and adults.

Crisis Counseling - Family Service Center

733-5450
1-800-922-5657
1-800-922-5652

2712 Middleburg Dr. # 103 B
Columbia, SC 29204

- ❖ The Crisis Counseling works on a sliding-fee scale.
- ❖ Family Service Center provides individual, marital and family counseling to people in need.

Daybreak Crisis Pregnancy Center

(803)771-6634
(803)356-6249
P.O. Box 2302

2009 Hampton Street

- ❖ Columbia, SC 29204
- ❖ Daybreak Crisis Pregnancy Center offers counseling services for women who have had an abortion experience.
- ❖ Services are also available for women in a crisis pregnancy situation.

Dickerson Center

(803)791-1511
1615 Augusta Rd.
West Columbia, SC 29169

- ❖ Provides forensic examinations, interviewing and therapy for children who have been sexually abused.

Dutch Fork Psychological Services

(803)407-7099 Bill Haxton and Beth Nowell-Haxton
(803)407-7259 Fax
7313 College Street
Irmo, SC 29063

- ❖ Dutch Fork Psychological Services provides child/adolescent therapy, adult therapy, family therapy, individual counseling, marital counseling, and psychological and neurological evaluations.

Lake Murray Counseling Center

Michael Deason, LPC, NCC
803 781 1003
7511 St. Andrews Road, Ste. 1
Irmo, SC 29063

Lexington County Mental Health Center - Adult Services

(803)359-7206
301 Palmetto Park Boulevard
Lexington, SC 29072

- ❖ To be eligible for services you must be at least 18 years of age and a resident of Lexington County.
- ❖ Lexington County Mental Health Center works on a sliding fee scale, Medicaid
- ❖ Lexington County Mental Health Center provides short and long-term treatment to adults experiencing chronic or acute mental health problems.
- ❖ Emergency consultations and services are provided to individuals in crisis.

Lexington County Mental Health Center

Child and Adolescent Services

(803)359-7206
301 Palmetto Park Boulevard
Lexington, SC 29072

- ❖ To be eligible for this program you must be under the age of 17.
- ❖ Payment for services is measured on a sliding fee scale, Medicaid.
- ❖ The Child and Adolescent Outpatient Clinic provides short and long-term counseling services for children and their families. These children and adolescents should be suffering from chronic or acute mental illness.
- ❖ Emergency consultations and treatment is available to people in crisis.

Lutheran Counseling and Enrichment Center - Family Counseling.

(803)750-9917

1440 Broad River Rd.

Columbia, SC 29210

- ❖ The fee for services at Lutheran Counseling and Enrichment Center is \$80 per session. Scholarship funds are available.
- ❖ This program provides counseling services for families.

Men's Resource Center

(803)256-0468

PO Box 1305

Columbia, SC 29202

Men's Resource Center provides group counseling for male perpetrators of domestic violence.

The fee for service is based on income. However, no one is refused service.

Mid Carolina Mental Health Association

(803)779-5363

(803)733-5425

2711 Middleburg Drive

Columbia, SC 29204

- ❖ Mid Carolina Mental Health Center provides comprehensive mental health services to people in need.

Palmetto Baptist Medical Center

Pastoral Counseling

803 434 2767

9 Richland Medical Park Drive #440

Columbia, SC 29203

- ❖ Therapy and counseling from ordained clergy.

Palmetto Baptist Medical Center - Behavioral Health Services

(803)296-8765

1-888-724-7888 or (803)434-4813 anytime for assessment

Taylor and Main Streets

Columbia, SC 29200

- ❖ Palmetto Baptist Medical Center Counseling Center provides initial consultation and evaluation referrals to community mental health centers and alternative treatment centers where appropriate treatment can be provided for youth.

Palmetto Health Psychiatric Services Assessment Center

(803)434-4813

Richland Springs

11 Richland Medical Park Drive

Columbia, SC 29203

- ❖ Palmetto Health offers crisis stabilization services, an inpatient psychiatric program, and a medical psychiatric program.
- ❖ Services cover issues dealing with depression, anxiety, bi polar disorder, eating disorders, personality disorders, and behavioral health problems.
- ❖ Treatment includes: clinical evaluations, group therapy, family services, physician supervision, psycho-educational groups, individual counseling, medical management, and art and active therapy.

Palmetto Richland Teen Male Mentoring Program

(803)434-4118 (Women's Center will direct client to the program director)

5 Richland Medical Park

Columbia, SC 29203

Post Trauma Resources

765-0700
1709 Laurel Street
Columbia, SC

- ❖ Provides immediate trauma response, crisis intervention, and consultation.

Sexual Trauma Services

(803) 771-7273
3700 Forest Dr. #350
Columbia, SC 29204

- ❖ Sexual Trauma services provides crisis intervention, treatment, and advocacy to survivors of sexual assault.
- ❖ Services may include 24-hour crisis hotline, accompaniment to the hospital, individual and group counseling.
- ❖ Services also include education and training of sexual assault to the general public and human service providers.

SIDS (Sudden Infant Death Syndrome)/ Joy in the Morning

(803)407-3185
117 Collins Drive
Columbia, SC 29212

- ❖ To be eligible for this program you must be a family member who has experienced a sleep-related infant death.
- ❖ SIDS is a support group for families who have experienced a sudden, unexpected, sleep-related infant death.

Sistercare, Inc.

(803)765-9428 Crisis Line
(803)926-0505 Administrative Office
P.O. Box 1029
Columbia, SC 29202

- ❖ Sistercare provides both individual and group counseling to abused women.
- ❖ Sistercare also operates a shelter for abused women and their families.

Stepping Stones Support Group - Baptist Medical Center

(803)771-5580

- ❖ Stepping Stones provides counseling services for parents and children whose children/siblings have died.

Support Group Network

(803)791-2800 Librarian will assist in finding the appropriate support group
Lexington Medical Center
West Columbia, SC 29168

- ❖ The support group network provides information and referral sources to individuals, organizations, and agencies.
- ❖ Information and referral sources are available for addictions, bereavement and death, health problems, disabilities, mental health counseling, parenting classes, life situations, and transitions.

Three Rivers Center for Behavioral Health

(803)796-9911

1-866-796-9911

(803)791-7622 Fax

2900 Sunset Blvd.

West Columbia, SC 29169

- ❖ Three Rivers will set up a payment plan. Insurance, Medicare, Medicaid, and Champus are all acceptable methods of payment.
- ❖ Three Rivers is an 80-bed behavioral health facility providing treatment for psychiatric and/or chemical dependency related illness.
- ❖ Three Rivers provides treatment for adolescents ages 11-17, adults, and seniors.
- ❖ Treatment addressed areas such as depression, suicidal thoughts, stress, dementia related illnesses, anxiety, grief, phobias, divorce, substance abuse, family counseling, eating disorders, and other emotional, sexual, or physical abuse problems.
- ❖ Three Rivers provides both inpatient and outpatient treatment.

USC Psychological Service Center

734-0378

2221 Devine Street, Ste 1000

Columbia, SC 29208

Free counseling

Vista Psychiatric Consultants

803 791-1485

1904 Sunset Blvd., Ste D

West Columbia, SC 29169

- ❖ Provides psychiatric services to children, adolescents, and adults.

William S. Hall Psychiatric Institute

Evelyn Griffin

(803)898-1725

(803)898-1596 Fax

P.O. Box 119-Cottage C

1800 Colonial Drive

Columbia, SC 29202

- ❖ **Psychiatric Medical Assessment-** Receives consultation by a psychiatrist to evaluate the need for pharmacology. Follow-up services are provided to determine the effectiveness of treatment.
- ❖ **Individual and Group Therapy**
- ❖ **Case Management-** Case management provides coordination of treatment, school consultation, and agency collaboration.
- ❖ **Community-Based Services-** Provides on-site community-based services. These services are provided on a contractual basis within the school and residential placements. The treatment provided includes individual therapy, group therapy, consultations with school staff, development of behavior management strategies, and psychiatric medical assessment.

Parenting Support

BabyNet - South Carolina Department of Health and Environmental Control

Phone: (803) 576-2990

2000 Hampton Street, Room 3061

Columbia, SC 29204

- ❖ To be eligible for this program you must have a child with a diagnosis of a developmental delay or disability.
- ❖ BabyNet provides early intervention services to families who have infants and toddlers with developmental delays or disabilities.
- ❖ This program provides a system of coordinated early intervention services to families who have infants or toddlers with developmental delays or disabilities.
- ❖ Early intervention services include therapies (occupational therapies, physical therapies, psychological therapies, and support groups, family counseling), assertive aids and devices, speech/vision/hearing services (fitting a hearing aid or glasses prescriptions), nursing services, health services, nutrition services, transportation to doctor's appointments, special instructions to parents in need, and service coordination.

Child Care Resource Center

1-800-526-5268

- ❖ Provides help in finding family home daycares that can provide services during second shift, weekends, etc.

Daybreak Crisis Pregnancy Center

(803)771-6634

(803)356-6249

P.O. Box 2302

2009 Hampton Street

- ❖ Columbia, SC 29202
- ❖ Daybreak Crisis Pregnancy Center offers counseling services for women who have had an abortion experience.
- ❖ Services are also available for women in a crisis pregnancy situation.

Family Educators

476-8242

River Springs Elementary School

- ❖ Provide education and support to families with children before birth to kindergarten entry in school District 5.

The Nurturing Center

(803)771-4160

1332 Pickens Street

Columbia, SC 29201

- ❖ The Nurturing Center provides both home-based and center-based services to parents and pre-school aged children for the prevention and treatment of child abuse and neglect.
- ❖ The Nurturing Center also offers parenting classes.

Parenting Partners

(803)774-5002

1826 Bull St

Columbia, SC 29201

- ❖ Provides parents with classes, programs, support groups and parent aides to strengthen families, provide education, intervention, and advocacy.

SAFE KIDS Midlands

(803)434-2955
Cassie Price
5 Richland Medical Park
Columbia, SC 29203

- ❖ SAFE KIDS Midlands seeks to prevent unintentional childhood injury through educational activities that encourage child and parent participation.

Prescription Assistance

Aiken/Barnwell/Lexington Community Action Council

(803)794-6778 (803)648-6836
650 Knox Abbott Drive 291 Beaufort Street
Cayce, SC 29033 Aiken, SC 29801

- ❖ Assistance with prescriptions on limited emergency basis.

Columbia Free Medical Clinic

765-1503
1875 Harden Street
Columbia, SC 29240

- ❖ Patients seen on first come, first serve basis
- ❖ In-house pharmacy will fill the prescriptions
- ❖ Must meet income guidelines

Cooperative Ministries

799-3853
3821 West Beltline Blvd.
Columbia SC 29204

- ❖ Richland County Residents only
- ❖ Can help one time with \$25.00 and it must be an original prescription and not a refill on a prescription.

Commun-I-Care

<http://www.commun-i-care.org/patients.htm>

Prescription Assistance Program

Eligibility requirements:

- ❖ Under age 65 must have income
- ❖ Must not have any insurance income at or below 200% of Federal Poverty Level to qualify
- ❖ Must show proof of income eligible for benefits for one year
- ❖ Requires \$20 application processing fee

God's Helping Hands

(803)791-4167
919 Holland Avenue
Cayce, SC 29033

- ❖ Original prescription needed. Identification needed for verification.
- ❖ Limited financial assistance available in crisis situation.

Patient Advocate Foundation Co-Pay Relief

www.copays.org

1-866-512-3861

- ❖ Provides pharmaceutical co-payment assistance for insure patients for following diseases:

Inflammatory bowel disease	Chron's Disease	Ulcerative Disease
Arthritic psoriasis	Rheumatoid arthritis	Breast Cancer
Colon cancer	Diabetes	Head and Neck
Kidney Cancer	Lung Cancer	Lymphoma
Malignant brain tumors	Pancreatic Cancer	Prostate Cancer
Sarcoma	Secondary issues resulting from Chemo	

Eau Claire Cooperative Health Centers, Inc.

Good Samaritan Plan
733-5969

- ❖ Sliding scale for doctors and dentists.

Healthwell Foundation (not sure)

<http://healthwellfoundation.org/apply.aspx>

- ❖ Provides financial assistance to cover out of pocket health care costs including prescription drug coinsurance, co-payments and deductibles.

Needy Meds

<http://www.needymeds.com/>

- ❖ List of prescription assistance programs by medication name, program name, or company name.

Rx Outreach (not sure)

http://www.rxoutreach.com/rxoutr/dpal_en.aspx

- ❖ New patient assistance program that provides discount prescription medications to qualified low-income individuals and families.

Sharing God's Love

(803) 732-3188
147 Friars Gate Blvd.
Irmo, SC 29063

- ❖ Original Prescription Only, no refills.

Wal-Mart \$4 Drug List

<http://www.livebetterindex.com/4drug.pdf>

Shelters and Transitional Housing

Christgate

(803)345-8085
100 Whites Home Place
Little Mountain, SC 29075

- ❖ To be eligible for services, you must be a female head of a household.
- ❖ Each participant must be between 17 and 60 years of age, have no more than 4 children (no males over 12yrs.), and agree to fully comply with the Christgate Residency Covenant.
- ❖ This house comfortably sleeps six families. There are private sleeping quarters, a family room, kitchen, dining room, bathroom, and laundry room.
- ❖ Christgate will also provide temporary residency to women and children who need protection from violent significant others.
- ❖ Classes and ministry are provided, enabling each person to develop the skills, stability, and confidence necessary to have successful independent family life.

Columbia Housing Authority

(803)254-3886
1917 Harden Street
Columbia, SC 29204

- ❖ Columbia Housing Authority requires applicants to apply in person at the above stated address.
- ❖ CHA is open to accept applications for 9-11am and 2-4pm daily.
- ❖ The waiting list has currently been closed. Please visit the website for waiting list status.
<http://www.chasc.org>

Family Shelter

(803)254-8344
2411 Two Notch Road
Columbia, SC 29204

- ❖ Family Shelter accepts families with up to five members.
- ❖ Family Shelter only accepts homeless families and/or Adults with children under the age of 13 years.
- ❖ A client needing to receive services must call the shelter directly.
- ❖ Family Shelter will provide emergency food, support groups, and case management services for people in need.
- ❖ The cost for services is \$3 per day per family.

Hannah House

(803)771-4357
1726 Sumter Street
Columbia, SC 29201

- ❖ Hannah House will only accept women and children.
- ❖ No boys over 12 years.

Killingsworth

1831 Pendleton Street
Columbia, SC 29201

- ❖ The fee for service is \$12 per night.
- ❖ Killingsworth provides a transitional home for adult women recovering from a crisis situation such as domestic violence or sexual assault.
- ❖ Room and board are provided, as well as job development, individual and group counseling, life skills training, advocacy, and spiritual development.

Oliver Gospel Mission

(803)254-6470
1100 Taylor Street
Columbia, SC 29201

- ❖ Oliver Gospel Mission provides a shelter for men only. No women and children are accepted.
- ❖ The shelter opens at 4pm.
- ❖ The first three nights are free. It is \$2 per night thereafter.
- ❖ The maximum stay at Oliver Gospel Mission is 30 days per person.

Providence Home to Men

(803)779-2927
3423 ½ Main St.
Columbia, SC 29203

- ❖ 36 bed Christian facility for homeless men.
- ❖ Provides needs assessments, employment assistance, life-skills training, counseling, and other supportive services.

Red Cross

(803) 251-6000
2751 Bull Street
Columbia, SC 29203

- ❖ Red Cross provides an emergency shelter for victims of a fire ONLY.

Samaritan's Well

(803) 785-4357
129 Gibson Court
Lexington, SC 29072

- ❖ Transitional Housing Program for Women and Children. No boys over the age of 12 accepted.
- ❖ Must submit to background check and 2 hour application/orientation process.
- ❖ Mother and children must agree to **68 rules**
- ❖ Ask for a minimum 3 month commitment to program.
- ❖ Mother able to work between the hours of 6:00am - 9:00pm and must make childcare arrangements for children while working.
- ❖ Need to have own vehicle to get to work.

Sistercare, Inc.

765-9428 (crisis line)
(803)254-7526
P.O. Box 1029
Columbia, SC 29202

- ❖ Sistercare, Inc. provides services of shelter, support groups, and education programs to abused women

St. Lawrence Place - Transitional Housing

(803)256-3999 Main Number
(803)933-0089 Fax
2400 Waites Road
Columbia, SC 29205

- ❖ To be eligible for this program you must be drug and alcohol free six months prior to entry, must have child(ren), and have some form of income.
- ❖ Can only pick up an application the 1st & 3rd Monday of the month at the 6:00 meeting. Arrive early. They will not start the meeting over for late applicants.
- ❖ 2-6 week application process.
- ❖ Not emergency housing.
- ❖ The fee for service is approximately 30% of income gross.
- ❖ The transitional Housing Program provides transitional housing to homeless families in Columbia.
- ❖ The families may receive services for up to 24 months.
- ❖ All applicants must meet the income guidelines and agree to take random drug screening tests.

Women's Shelter

779-4706
3425 North Main Street
Columbia, SC 29203

- ❖ Transitional housing program offers up to two years.
- ❖ Assistance with securing employment, legal issues and educational needs.
- ❖ Counseling is also available.

Support Groups**Academy for Eating Disorders**

703-556-9222
❖ Provides information, advocacy, and newsletters

Alcoholics Anonymous

(803)254-5301

ALANON Family Group

(803)735-9944
❖ Support for teens and their families struggling with drug and alcohol abuse.

Covenant House Nine Line

1-800-999-9999

- ❖ Provides Support to runways, persons thinking about running away and families who have had a child run way.

Eating Disorders Awareness and Prevention

1-800-931-2237

- ❖ Educational resources on prevention and interventions.

Federation of Families

(803)779-0402

- ❖ Provides advocacy and parental support for families with children that have a mental health diagnosis.

Gambler's Anonymous

1-800-313-0170

- ❖ Support group for those addicted to, or struggling with gambling.

Good Grieving through Palmetto Health

296-2273

Caring House

2800 Colonial Drive

Columbia, SC 29203

- ❖ Support group for kids who have experienced a recent loss.
- ❖ Must be at least three months since loss.
- ❖ Groups held quarterly.

Narcotics Anonymous

(803)254-6262

1-800-922-6587

National Center for PTSD

802-296-6300

- ❖ Provides information and comprehensive website at www.dartmouth.edu/dms/ptsd

National Council on Disability

202-272-2004

- ❖ Provides information on child rights, financial aid, and referrals to other agencies

National Depressive and Manic Depressive Association

1-800-826-3632

- ❖ Support groups, patient support, advocacy, and referrals.

National Foundation for Depressive Illnesses

1-800-239-1264

- ❖ Provides information to public and professionals regarding depression.

National Runaway Switchboard

1-800-786-2929

- ❖ Provides Shelter and referral source information and can also act as a message service between families and their runaway child.

Overeaters Anonymous

(803)736-9878

- ❖ Support group for eating disorders.

Prevention Partners Caregiver Support Group

(803)737-2779

- ❖ Support group for those dealing with emotional and physical stress due to care giving.

Pro Parents

1-800-759-4776

- ❖ Provides parent aides to help families address issues of mental illness.

Rape, Abuse, and Incest National Network

1-800-656-HOPE

- ❖ Provides free confidential counseling and referrals to other organizations.

South Carolina Share

(803)739-5712

- ❖ Statewide organization that maintains a self-help and support group for people with mental illnesses.

Support Group Network

(803)791-2800

- ❖ Offers a clearinghouse to link individuals to various support groups in the Midlands.

Three Rivers

(803)796-9911

2900 Sunset Blvd

West Columbia, SC 29169

- ❖ Three Rivers Behavioral Health sponsors regular support groups for Alcoholics Anonymous, Emotions Anonymous, Narcotics Anonymous, and Federation of Families.

Supportive Services**Baby Basics**

(803)733-5436

1800 Main Street, Suite 3A

Columbia, SC 29201

- ❖ Baby Basics provides a family-friendly home visitation program, which provides free support and information to first-time parents. This support can begin in the last three months of pregnancy and can continue through six months after birth.

Family Connection of SC

(803)252-0914

2712 Middleburg Drive, St 103 B

Columbia, SC 29204

- ❖ Family Connection provides support to families who have a child with disabilities.

Family Connection of South Carolina-ADD/ADHD Support Group

(803)252-0914

2712 Middleburg Drive

Columbia, SC 29204

- ❖ To be eligible for this program you must be a parent with a child who has ADD/ADHD.
- ❖ This is a support group for parents of children with ADD/ADHD

Family Connection of South Carolina-Family Partner Program

(803)252-0914

2712 Middleburg Drive

Columbia, SC 29204

- ❖ To be eligible for this program, you must be a parent of a child with disabilities and special needs.
- ❖ Parent-to-parent networking matches parents of children with disabilities with support parents who have similar conditions. They will offer support and encouragement to these parents.

Family Connection of South Carolina-Respite Program

(803)252-0914

2712 Middleburg Drive

Columbia, SC 29204

- ❖ There are many sites available. Eligibility requirements may vary. Please call for more information on eligibility.
- ❖ The respite cooperatives provide parents with a break from care giving.

Governor Ombudsmen's Office

(803)734-0457

1205 Pendleton Street, Brown Building

Columbia, SC 29201

- ❖ To be eligible to receive services you must be a person having a disability, either physical or mental, which prohibits you from functioning in life.
- ❖ The client assistance program advocates for clients with disabilities relating to vocational rehabilitation and commission for the blind.

Health Care for Homeless Veterans

776-4000

6439 Garners Ferry Road

Columbia, SC 29209

- ❖ Provide a continuum of services to homeless veterans.

Hispanic Outreach Services

(803)419-5112

300 Berkshire Drive/ Suite B

Columbia, SC 29223

- ❖ Provides health services and translators for Hispanic women who have experienced domestic abuse or sexual assault.

HIV Services

USC Dept. of Medicine

(803)343-3437

1407 Elmwood Ave.

Columbia ,SC 29201

- ❖ Provides housing, employment, referral and Case Management.
- ❖ Serves Richland, Lexington, Fairfield, Kershaw, Calhoun, Newberry and Saluda.

Homeless Recovery Center

799-0331

1433 Gregg St.

Columbia, SC

- ❖ Open everyday from 8:30 to 5:00 pm.
- ❖ Includes case management, housing, counseling, medication, psychological treatment.

Interfaith Community Services, Inc.

(803)252-8390

819 Woodrow Street

Columbia, SC 29205

- ❖ Interfaith Community Services provides childcare referrals and ABC vouchers to those who qualify.
- ❖ Interfaith community services can also provide assistance with childcare payments.

Library for the Blind and Physically Handicapped

800-922-7818

301 Gervais Street

Columbia, SC 29202

- ❖ Services are provided free-of-charge.
- ❖ Library for the Blind and Physically Handicapped provides large print books, talking books, and books printed in Braille for people in need.

Prevent Child Abuse SC

(803)733-5430

1634 Main Street

Columbia, SC 29201

- ❖ Fee for services will vary on the type of service provided.
- ❖ Prevent Child Abuse SC provides treatment, education, prevention, and advocacy on behalf of abused and neglected children.
- ❖ Services that are provided by Prevent Child Abuse SC include: Welcome baby, Parent Education/Parent Support, Child Sexual Abuse Prevention, multidisciplinary consultation on cases, therapeutic childcare for abused school children, etc.

Public Defender's Office

(803)765-2592

1701 Main Street

Columbia, SC 29201

- ❖ Fee for services will vary depending on income.
- ❖ Public Defender's Office will provide legal services to all adult and juvenile criminal cases.

SC Commission for the Blind

803 898-8731

1430-A confederate Ave.

Columbia, SC 29202

- ❖ Provides job training and vocational evaluation.

United Black Fund of South Carolina

(803)256-0270

2219 Two Notch Road

Columbia, SC 29204

- ❖ United Black Fund provides referral services dependent upon need.

United Way of the Midlands

(803)733-5400

1800 Main Street

Columbia, SC 29201

- ❖ United Way of the Midlands provides information and referrals for people in need.

Victims Assistance Division

(803)734-1900

1205 Pendleton Street, Ste 401

Columbia, SC 29201

- ❖ Victims Assistance provides assistance to victims of a crime.

Transportation

Cooperative Ministry – CAR Program

803-799-3853 (Main Number)

803-252-8621 (Fax)

1928 Taylor Street

P.O. Box 1705

Columbia, SC 29202

- ❖ The Cooperative Ministry accepts cars in good working condition.
- ❖ These cars are given to people who need them to obtain and keep a job.
- ❖ To receive a car, you must participate in a 3-hour training course that addresses preventative auto maintenance and budgeting.

Dial-A-Ride Transit (DART)

(803) 255-7123

1409 Huger St.

Columbia, SC 29201

- ❖ Provides medical transportation.

Logisticare (Medicaid Transportation)

1-855-201-0434

- ❖ Provide Medicaid number to receive transportation.

Utilities/Rent Assistance

Aiken/Barnwell/Lexington Community Actions Commission, Inc.

(803)794-6778

- ❖ Community Actions Commission, Inc. provides assistance with rent and utilities to those in need.
- ❖ Lexington County Residents Only.

Cooperative Ministries

(803)799-3853

1928 Taylor Street

Columbia, SC 29201

- ❖ Cooperative Ministries will provide assistance for help with the water bill, electric bill, and rent and food.
- ❖ Cooperative Ministries will also aid individuals in paying for birth certificates and picture ID's.
- ❖ A maximum of \$50 can be provided.

Family Service Center

(803)733-5450

1800 Main Street

Columbia, SC 29201

- ❖ Family Service Center offers individuals the services of consumer credit counseling, preparing budgets, and money management.

Gleamns Headstart

(803)750-0053

1400 St. Andrews Road

Columbia, SC 29210

- ❖ To be eligible for services you must be low income.
- ❖ Gleamns Headstart offers one-time financial assistance with rent/utilities.

Mid Carolina Electric Coop (MCEC)

Operation Round-Up

- ❖ Funds collected are given to those in need in times of crisis.

- ❖ Application must be filled out and submitted by the end of the month but preferably before the end of the month. They require a face to face interview, set up within a couple of days after the application is received.
- ❖ They meet the 2nd Tuesday of the month to decide who will qualify.

Lutheran Family Services (not sure)

803-750-9917
1118 Union Street
Columbia, SC 29201

- ❖ Assists with rent and utility payment.

Providence Home (not sure)

(803)779-2927
3421 North Main Street
Columbia, SC 29203

- ❖ Providence Home will offer assistance with rent and utilities as needed.

SCE&G

(803)799-9000

- ❖ SCE&G will assist people with a deferred payment plan.

Salvation Army Woodyard Fund

(803)765-0260

- ❖ The Salvation Army provides emergency assistance to individuals in need to keep their heat on during the winter months.
- ❖ You must bring proof of employment, picture ID, and social security card. You must also bring receipts of previous bills to show hardship.
- ❖ If you receive welfare benefits, you will need to bring a household summary statement from DSS.

Sharing God's Love

(803)732-3188
147 Friarsgate Blvd.
Irmo, SC 29063

- ❖ To receive services you must be a resident of 29063, 29210, 29212, or 29200.
- ❖ Sharing God's Love provides assistance with electric bills.

Sisters In Service

(803) 345-5403 - Betty Park - her address is 339 Will Wise Road, Chapin, SC 29036

- ❖ Provides assistance with crisis related expenses for single working mothers or working families to get back on their feet.
- ❖ Call Betty - she will ask MSW to complete the referral form and **fax it to Dolly Kent at 407-1313 but call first (749-1175) to make sure she checks her fax.**
- ❖ They like to have families they take on to work with for a few months but are willing to do one-time assistance.
- ❖

Wateree Community Action

(803)786-4250
3220 Two Notch Road
Columbia, SC 29204

- ❖ Wateree Community Action provides assistance with rent, and heating and cooling in emergency situations.
- ❖ To be provided services you must bring an eviction notice or statement.
- ❖ Richland County Residents Only

We Care - Chapin Interfaith Outreach

(803)345-3244
1808 Chapin Road

PO Box 491
Chapin, SC 29036

- ❖ Provides assistance with emergency food baskets.
- ❖ Limited funds for rent, utilities, medical, dental and shelter.

Vision Services

Dr. Carlson

(803) 254-4951
1513 Gregg Street
Columbia, SC 29201

- ❖ Medicaid

Columbia Eye Clinic

(803) 779-3070
1920 Pickens St.
Columbia, SC 29201

Contact Lens Clinic

803 (741-2020)
7499 Parklane Rd Suite 160
Columbia, SC 29223

- ❖ Accepts 1st choice only.

Eye Associates

600 Knox Abbot Drive (803) 794-4444
Cayce, SC 29033

- ❖ Accepts Medicaid.

Eye Care Center

(803) 781-2212
7229 St. Andrews Road
Irmo, SC 29063

- ❖ Medicaid

Gift of Sight

Lens Crafters

- ❖ Will provide glasses to needy children. Requires letter from school with Tax ID identifying needy student.

H. Rubin Vision Centers

Garners Ferry (803) 776-5275
Bush River Road (803) 798-2290

- ❖ Regular in-store discounts apply.
- ❖ Medicaid is accepted but does not cover eye exam only eye wear.

Healthy Learners

(803) 256-6608
2711 Middleburg Drive, Suite 205
Columbia, SC 29204

- ❖ School linked program that helps provide eye wear to students who are in need. The child must be referred by the school.

Lexington County Health Department

(803) 791-3580

- ❖ Vision tests and referrals for services are not available at the clinic.

Lions Club

(803)796-1304

110 Medical Circle

West Columbia, SC 29169

- ❖ Provides glasses, hearing aides and exams after an investigation of needs.

Palmetto Eye Care

(803) 732-4166

6961 St. Andrews Road

Columbia, SC 29212

- ❖ Accepts Medicaid.

Palmetto Vision Program

Palmetto Baptist

(803) 296-5437

- ❖ Provides assistance for children who do not have insurance to obtain glasses. Appointments are set up through Wal-Mart Vision Center

Drs. Park and Phillips

(803) 254-6306

1818 Hampton St.

Columbia, SC 29201

- ❖ Accepts Medicaid and helps connect patients to the Healthy Learners program (must be referred by school).

❖

Dr. Schwartz (Eye surgeon)

(803) 256-0641

1655 Bernadeen St.

Columbia, SC 29204

- ❖ Accepts Healthy Connections Medicaid only.
- ❖ Surgery Only.

Wal-Mart Vision Centers

Forest Drive (803) 790-4600

Harbison Blvd. (803) 732-8663

Sunset Blvd. (803) 356-1852

- ❖ Accepts Medicaid.

West Columbia Vision Center

(803) 796-3646

1235 D. Ave.

West Columbia, SC 29169

- ❖ Accepts Medicaid and helps connect patients to the Healthy Learners program (must be referred by school).

Vision Service Plan, Sight for Students

1-800-877-7195

- ❖ Will provide student with new glasses if a referral is made by the school nurse.